

The ONS SIG Council

Introduction and Update



Opportunities

- Learn about the responsibilities and requirements of SIG leadership
- Get some tips/best practices from other SIG leaders
- Meet & talk with ONS Board members
- Network with SIG leaders and other ONS leaders
- Meet face-to-face with your SIG Council representative and/or Coordinator/Coordinator-Elect
- Plan collaborations with other SIGs
- Update your Strategic Goals
- Navigate through the SIG Virtual Community

Welcome and Housekeeping

- Complete the Evaluation electronically, by Thursday, August 21st, after your return home to receive CNE.
- There is no assigned seating for SIGs.
- Make sure to meet at least 1 new person.
- Be sure to share 1 tip or pearl of wisdom during this weekend.
- Take a break.

Darcy Burbage, MSN,RN,AOCN[®],CBCN[®]



- SIG Council Chair
- Nurse Navigator from the Christiana Care Breast Center at the Helen F. Graham Cancer Center
- Past Coordinator from the Breast Care SIG

dlburbage@gmail.com

dburbage@christianacare.org

Rose Ermete, RN, BSN, OCN[®], CCRP



ermeter@trinity-health.org

- Research Nurse Coordinator from Our Lady of Hope Cancer Center, Michigan Cancer Research Consortium
- Past Coordinator from the Clinical Trial Nurse SIG
- Represents:
 - Acute & Critical Care
 - Advanced Nursing Research
 - Blood and Marrow Stem Cell Transplant
 - Clinical Trial Nurses
 - Neuro-Oncology

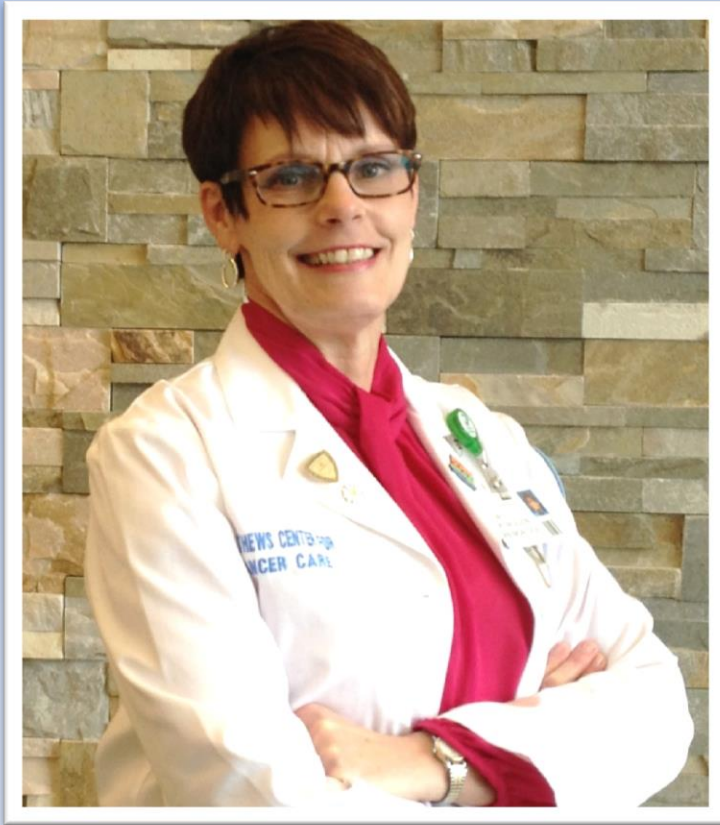
Patricia Frank, BSN, RN



patriciafrank1004@verizon.net

- Retired
- Previous Coordinator from the Home Care & Palliative Care SIG
- Represents:
 - Ethics
 - Home Care & Palliative Care
 - Pain Management
 - Spiritual Care
 - Survivorship, Quality of Life & Rehabilitation

Lori McMullen, MSN, RN, OCN®



lormak5@comcast.net

- Senior Oncology Nurse Navigator at The Edward and Marie Matthews Center for Cancer Care
- Past Coordinator from the Nurse Navigator SIG
- Represents:
 - Breast Care
 - Cancer Genetics
 - Lymphedema Management
 - Nurse Navigator
 - Prevention/Early Detection

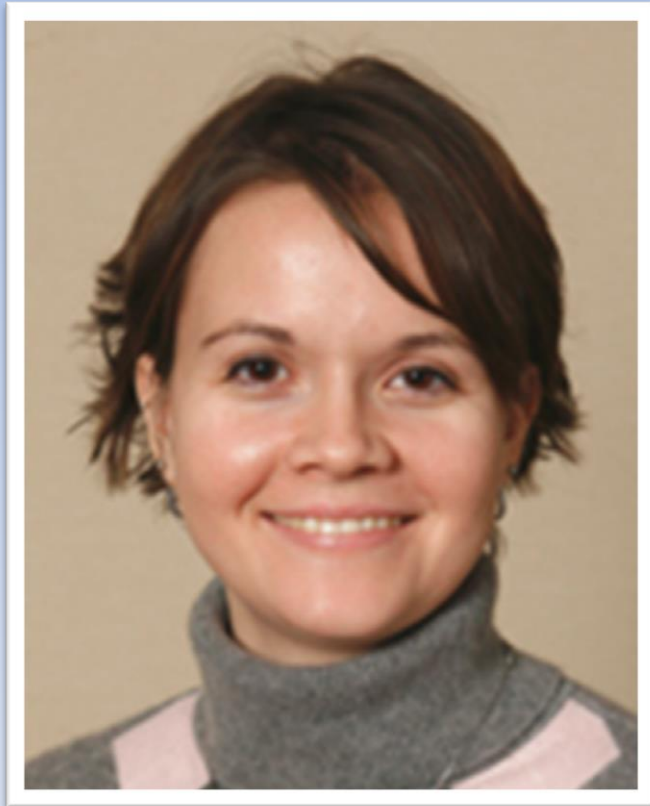
Barbara Owens, PhD, RN, OCN®



owensb0304@yahoo.com

- Instructor - Elsevier
- Previous Coordinator from the Transcultural Nursing Issues SIG
- Represents:
 - Management & Program Development
 - Radiation
 - Staff Education
 - Transcultural Nursing Issues

Meghan Routt, MSN, RN, GNP/ANP, AOCNP®



Meghan.routt@osumc.edu

- NP from Ohio State University Medical Center, James Cancer Hospital
- Previous Coordinator from the SUR SIG
- Represents:
 - Chemotherapy & Biotherapy
 - Complementary & Integrative Therapies
 - Neutropenia
 - Surgical Oncology

Lynette Woide MSN,RN



ctryathrt@aol.com

- Territory Manager from Genentech
- Previous Coordinator from the Pharmaceutical/Industry Nursing SIG
- Represents:
 - Ambulatory/Office Nursing
 - Clinical Nurse Specialist
 - Nurse Practitioner
 - Pharmaceutical/Industry Nursing

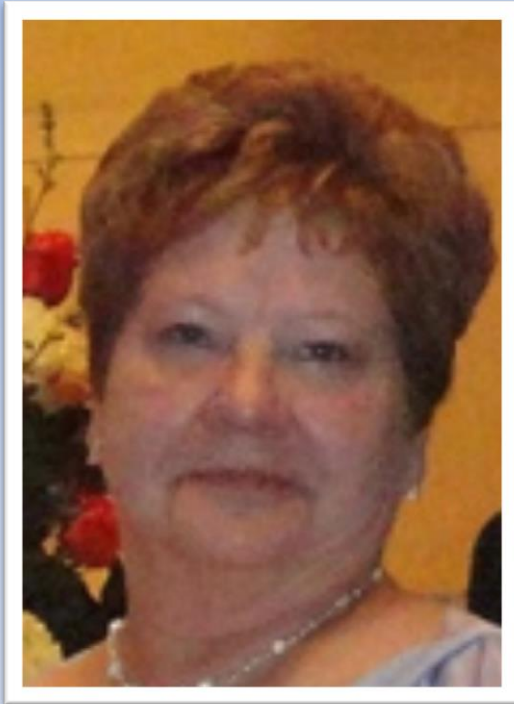
Chip Bailey, Jr., RN, BS, MN, PhD, FAAN



- Associate Professor at the University of NC Chapel Hill, School of Nursing
- Past ANR SIG Coordinator
- ONS Director-At-Large
- ONS Board Liaison to the SIG Council

Chip.bailey@duke.edu

Carol DeMarco VIP

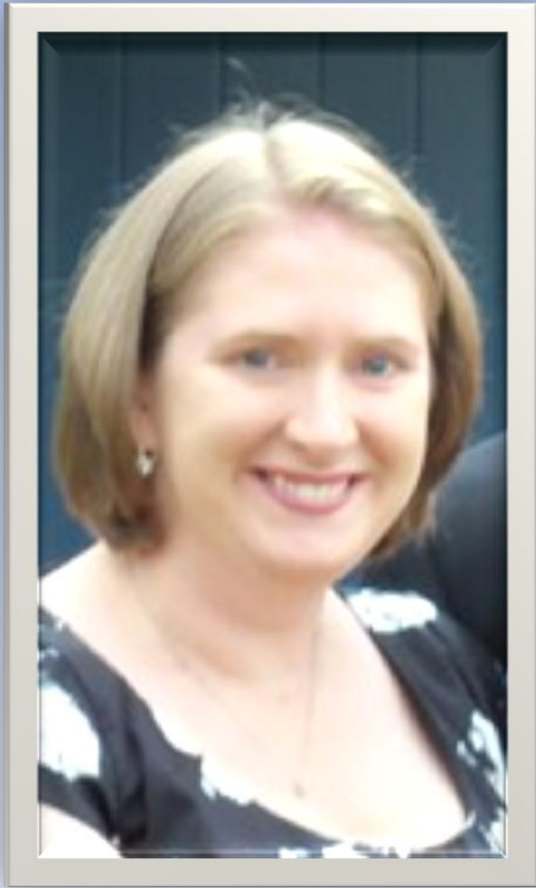


cdemarco@ons.org

- From ONS
- Membership Specialist for the ONS SIGs
- Represents:
 - You



Diane Scheuring, MBA,CAE,CVA,CMP



- From ONS
- Manager of Membership & SIG Relations
- Represents:
 - You
 - ONS Nominating Committee

dscheuring@ons.org

The ONS SIG Council

- Serves as an additional resource to current SIG Coordinators.
- Monitors SIG activities.
- Makes recommendations to the ONS Board based on the needs of the SIGs.
- Develops resources like the SIG Resource Guide to help current and future SIG Coordinators.
- Serves as project team for the SIG Leadership Workshop.

What We Hope to Accomplish

- Better integration of SIGs within the organization.
- Support SIGs to offer additional resources and tools to the general ONS Membership.
- Have fully supported SIG Leaders.
- Review SIG structures and requirements to ensure reasonable expectations.
- Host successful SIG Leadership Workshop.
- Ensure that the ONS Board of Directors understands the needs of the ONS SIGs.



Current Proposals for the ONS Board

- Creation and/or disbanding of Focus Groups be handled at the staff level instead of with the ONS Board to allow ONS to be more nimble and timely in managing these groups.
- ONS continue to provide the SIG Leaders with the opportunity to attend the SIG Leadership Workshop and include the option for every SIG to send two representatives to encourage future leadership development.
- SIG leaders (editors, web administrators, etc.) be offered the opportunity to attend the SIG Leadership Workshop should the coordinator and/or coordinator elect not be available.
- Holding meetings at Congress remain a requirement for the SIGs and that some financial support for the SIG Coordinator should be made available to help cover travel & hotel costs.



Help Us, Help You!



Questions ?



How to weigh yourself ?



“I can't believe I was doing it wrong all these years.”